



SILVER BLUFF ELEMENTARY

2609 SW 25th Avenue, Miami, FL 33133

Mayra Barreira, Principal
Christina Garcia, Assistant Principal

December 18, 2023

Dear Parents:

As we approach the holiday season, the district has implemented Winter Break At-Home Learning (homework) assignments in various subjects for PreK through 5th grade. We have prepared and copied a Winter Home Learning packet with the essential assignments for your child to complete in order to better prepare him/her upon their return on January 8, 2024. The assignments are to be completed during the two-week recess from December 22 to January 7, 2024.

Students are expected to work on various standards/skills according to their grade level expectations at this point of the school year. All assignments will also be posted on our school's website at <http://silverbluff.dadeschools.net> as of today for your convenience in the event it is misplaced. The assignments are due upon your child returning on **Monday, January 8, 2024**. All assignments will be reviewed in class and graded; therefore, it is imperative that it is completed with much care and that the student pace him/herself in order to benefit from the review. We encourage parents to monitor and review the assignment with their child.

Additionally, please continue to encourage your child to read for recreation for 30 minutes daily to build comprehension and vocabulary as well as take advantage of the many educational programs available through our district's Schoology app on the student portal. Remember that you, as the parent, also has access to our district portal to view your child's grades and resources. We also highly recommend students to continue using their online resources such as i-Ready Reading and Math or Imagine Learning (grades K-5), MyON (grades K-5), and Reflex Math (grades 1-5). They are all research-based educational programs proven to help you child in closing the student's individual achievement gap, when completed with fidelity which includes completing 45 minutes weekly and passing the assignments with 80% or higher. Your child is familiar in logging in since they use these programs in school daily.

You may also review the district plan as it is an enhancement to further practice with your child. The district's plan can be accessed from the following website:

<https://divisionofacademics.dadeschools.net>

We hope these assignments prove to be a good learning experience for your child. Together, we can guarantee a successful start of the 2024 year where students feel well prepared for the standards they have been learning. Thank you for helping your child avoid winter regression by supporting him/her at home during the 2-week holiday recess.

Wishing you and your loved ones a restful, safe, and enjoyable holiday season.

A handwritten signature in cursive script that reads "M. Barreira".

Mayra Barreira,
Principal

Telephone: 305.856.5197/Fax: 305.854.9671
silverbluff.dadeschools.net



SILVER BLUFF ELEMENTARY

2609 SW 25th Avenue, Miami, FL 33133

Mayra Barreira, Principal
Christina Garcia, Assistant Principal

Estimados Padres:

A medida que nos acercamos a la temporada de vacaciones, el distrito ha implementado tareas de aprendizaje en casa durante las vacaciones de invierno en varias materias desde Preescolar hasta 5° grado. Hemos preparado y copiado un paquete de Aprendizaje para realizar en casa durante las vacaciones de invierno con las tareas esenciales para que su hijo/a las complete y se prepare mejor para su regreso el 8 de enero de 2024. Las tareas deben completarse durante el receso de dos semanas, desde el 22 de diciembre hasta el 7 de enero de 2024.

Se espera que los estudiantes trabajen en diferentes estándares/habilidades de acuerdo con las expectativas de su nivel de grado en este punto del año escolar. Todas las tareas también estarán publicadas en el sitio web de nuestra escuela en <http://silverbluff.dadeschools.net> a partir de hoy, para su conveniencia en caso de extravío. Las tareas deben entregarse cuando su hijo/a regrese el lunes 8 de enero de 2024. Todas las tareas serán revisadas en clase y calificadas; por lo tanto, es imperativo que se completen con mucho cuidado y que el estudiante se administre su tiempo para beneficiarse de la revisión. Alentamos a los padres a supervisar y repasar las tareas con sus hijos.

Además, les pedimos que sigan animando a sus hijos a leer por diversión durante 30 minutos diarios para desarrollar la comprensión y el vocabulario, y que aprovechen los numerosos programas educativos disponibles a través de la aplicación Schoology del distrito en el portal de estudiantes. Recuerden que ustedes, como padres, también tienen acceso a nuestro portal del distrito para ver las calificaciones y recursos de su hijo/a. También recomendamos encarecidamente a los estudiantes que continúen utilizando sus recursos en línea, como i-Ready Reading y Math o Imagine Learning (grados K-5), MyON (grados K-5) y Reflex Math (grados 1-5). Todos son programas educativos basados en investigaciones probadas para ayudar a su hijo/a a mejorar su rendimiento estudiantil, siempre que se completen con fidelidad, lo que incluye realizar 45 minutos semanalmente y aprobar las tareas con un 80% o más. Su hijo/a está familiarizado/a con cómo iniciar sesión, ya que utilizan estos programas diariamente en la escuela.

También pueden revisar el plan del distrito, ya que es un complemento para practicar más con su hijo/a. El plan del distrito está disponible en el siguiente sitio web:

<https://divisionofacademics.dadeschools.net>

Esperamos que estas tareas resulten ser una buena experiencia de aprendizaje para su hijo/a. Juntos, podemos garantizar un comienzo exitoso en el año 2024, donde los estudiantes se sientan bien preparados para los estándares que han estado aprendiendo. Gracias por ayudar a su hijo/a a evitar la regresión invernal al apoyarlo/a en casa durante el receso de vacaciones de 2 semanas.

Les deseamos a ustedes y a sus seres queridos una temporada de vacaciones tranquila, segura y agradable.

Sinceramente,

A handwritten signature in cursive script that reads "M. Barreira".

Mayra Barreira,
Directora

Telephone: 305.856.5197/Fax: 305.854.9671
silverbluff.dadeschools.net

Name: _____

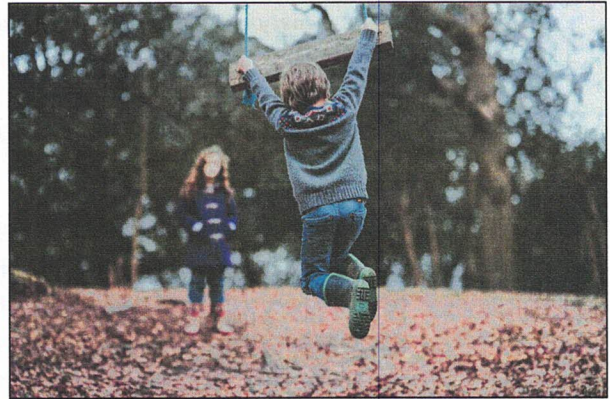
Class: _____

Diary of a Sweatshirt: The Best Day Ever

By Diana Murray
2019

Mask poems were first written in ancient Greece and use the first person "I" to share the point of view of an object, an animal, or a person who is not the poet. At the end of the poem, the speaker makes their true self known. In this mask poem, the speaker shares about their day. As you read, take notes on how the speaker spends their best day ever.

- [1] Today I felt a lovely breeze while playing in the leaves. I got a little dirty, though, especially my sleeves. My pockets got filled up with rocks, which surely was no pleasure.¹
- And yet, I must admit, it's awfully fun to dig for treasure.
- [5] I snagged my fabric² on a branch while climbing up a tree.
- But, oh! What an amazing view. I've never felt so free! I'm used to being in my drawer, all neatly tucked away.
- I'm thankful I got worn for once, outside where I could play.



"Children playing on tree swing in woods" by Annie Spratt is licensed under CC0.

"Diary of a Sweatshirt: The Best Day Ever" Copyright (c) 2019 Diana Murray. Originally published in Thanku: Poems of Gratitude edited by Miranda Paul and published by Lerner Publishing Group, Millbrook Press. Reprinted by permission of the author.

Unless otherwise noted, this content is licensed under the [CC BY-NC-SA 4.0 license](https://creativecommons.org/licenses/by-nc-sa/4.0/)

1. **Pleasure** (*noun*) a feeling of happiness, delight, or joy
2. cloth that is woven or knitted

Text-Dependent Questions

Directions: For the following questions, choose the best answer or respond in complete sentences.

1. What is the theme of the poem?
 - A. Be careful what you wish for.
 - B. Always be true to who you are.
 - C. Spending time outside is unpleasant.
 - D. Having new experiences can bring us joy.

2. The poet most likely uses the word "diary" in the title of this poem because —
 - A. a diary is a place where you write your feelings about what happens each day.
 - B. a diary is a book where authors tell stories that did not happen in real life.
 - C. a diary is a special saying that helps you remember important events.
 - D. a diary is an important piece of clothing that children like to wear.

3. Which line from the poem gives a hint about the speaker's true self?
 - A. "Today I felt a lovely breeze while playing in the leaves." (Line 1)
 - B. "And yet, I must admit, it's awfully fun to dig for treasure." (Line 4)
 - C. "I snagged my fabric on a branch while climbing up a tree." (Line 5)
 - D. "But, oh! What an amazing view. I've never felt so free!"(Line 6)

4. How do lines 7-8 add to the reader's understanding of the poem?
 - A. They show that the speaker is a tree branch.
 - B. They show that the speaker is a collection of rocks.
 - C. They show that the speaker is an empty dresser drawer.
 - D. They show that the speaker is a sweatshirt that has never been worn.

5. What makes this day the "best day ever" for the speaker of the poem?

Name: _____

Class: _____

From "The Wild Horses of Assateague Island"

By National Park Service, US Department of the Interior

On Assateague Island, wild horses continue to live freely. In this informational text, the author discusses how the horses likely came to the island and what their life is like on the island. As you read, take notes on the wild horses' contact with humans on the island.

A National Treasure

- [1] The wild horses of Assateague Island are descendants¹ of domesticated² animals brought to the island over 300 years ago. Horses tough enough to survive the scorching heat, abundant insects, stormy weather and poor quality food found on this windswept barrier island have formed a unique wild horse society. Enjoy their beauty from a distance, and you can help make sure these extraordinary wild horses will continue to thrive on Assateague Island.

"My treasures do not click together or glitter. —They gleam in the sun and neigh in the night." —Bedouin proverb.³



"the unspoken words of horses 2 (assateague pony)" by eric lynch is licensed under CC BY-NC-ND 2.0.

Where did they come from?

Were the horses shipwreck survivors...

Local folklore describes the Assateague horses as survivors of a shipwreck off the Virginia coast. While this dramatic tale of struggle and survival is popular, there are no records yet that confirm it.

...or settlers' horses?

During the 17th century free-roaming horses, cows, sheep and pigs caused expensive crop damage to local farms. Farmers were required to pay taxes on all mainland livestock and fence them in.

1. a person or animal related to a group from the past
2. animals that are made less wild to be pets or farm animals
3. a short well-known saying

- [5] Like people in the 21st century, these resourceful coastal residents looked for ways to avoid paying this tax. They turned to nearby Assateague Island with its abundance⁴ of food, shelter and a natural “corral”⁵ made of water to solve their problem.

It is likely that modern Assateague horses are descendants of those hardy animals turned loose on the island to graze tax-free.

Living the wild life in Maryland

Assateague’s horses are uniquely adapted to survive on a barrier island. How do they do it?

What do they eat?

The horses spend most of their time grazing on abundant but nutrient-poor saltmarsh cordgrass, saltmeadow hay and beach grass. The horses’ short stature⁶ is a result of hundreds of years of adaptation to this low quality diet. Genetically they are considered horses, even though they are now pony size.

The Assateague horses drink over twice the amount of water that domesticated horses will due to their salty food supply. All that drinking combined with a high salt diet contributes to their bloated appearance.

Where do they live throughout the year?

- [10] Spring brings cool, rainy weather and fresh plant growth to the island. Many of the horses live in the marshes close to their best food sources. Foals⁷ are usually born in late spring and live with their mothers in a family group called a “band.” Each band is usually made up of 2–10 mares,⁸ their offspring, and a stallion.⁹

Hot, humid, and full of insects, summer brings a new set of challenges. The horses escape the mosquitoes and flies of the marsh by spending more time on the beach and in the surf, letting the refreshing ocean breezes carry away airborne pests. Cooler fall weather and fewer insects allow the bands to move from the beaches back to the marshes and their abundant grasses.

The horses prefer to browse in shrub thickets during the damp, chilly, winter season. Their thick, furry coats will protect them from ferocious¹⁰ winter winds and the occasional snowstorm.

4. **Abundance** (*noun*) a large amount of something
5. a pen for farm animals
6. height
7. a young horse
8. a female horse
9. an adult male horse
10. **Ferocious** (*adjective*) extreme and unpleasant

Do they receive veterinary care?

While action may be taken to end the suffering of a gravely ill, seriously injured, or dying horse, no measures are taken to prolong the lives of Maryland's wild horses. As with other species of Assateague wildlife, horses that are sick or weak do not survive. This helps maintain a hardy, healthy population of wild horses.

Virginia's horses are privately owned by the Chincoteague Volunteer Fire Department and receive some veterinary care.

Where can you see the wild horses?

In Maryland

- [15] Maryland's horses are owned and managed by the National Park Service. They are free-roaming wildlife and could be anywhere in the park. During the summer months many bands can be found on the beach. You can often see the horses and other wildlife by driving slowly along park roads. Protect island habitat by parking only in designated parking areas. The "Life of the Forest" and "Life of the Marsh" trails are good places to look, especially during spring, fall and winter seasons.

Do not feed or pet the horses. Horses that learn to come up to the road are hit and killed by cars.

In Virginia

Virginia's horses are privately owned by the Chincoteague Volunteer Fire Department and are fenced in large enclosures.

Look for the horses in the marshes along Beach Road and from the observation platform on the Woodland Trail.

"The Wild Horses of Assateague Island" by the National Park Service, U.S. Department of the Interior is in the public domain.

Unless otherwise noted, this content is licensed under the [CC BY-NC-SA 4.0 license](https://creativecommons.org/licenses/by-nc-sa/4.0/)

Text-Dependent Questions

Directions: For the following questions, choose the best answer or respond in complete sentences.

1. PART A: What does the word "adapted" mean as it is used in paragraph 7?
 - A. chosen because of a gentle manner
 - B. changed in order to fit certain conditions
 - C. cared for because of harsh living conditions
 - D. colored in order to match the surroundings

2. PART B: Which statement from "The Wild Horses of Assateague Island" best supports the answer to Part A?
 - A. "Genetically they are considered horses, even though they are now pony size." (Paragraph 8)
 - B. "Many of the horses live in the marshes close to their best food sources." (Paragraph 10)
 - C. "Foals are usually born in late spring" (Paragraph 10)
 - D. "This helps maintain a hardy healthy population of wild horses." (Paragraph 13)

3. PART A: Which statement provides the best explanation of why the Assateague horses have survived on the barrier island for so long?
 - A. The townspeople have kept the horses as pets for many years.
 - B. The horses are protected when visitors drive cautiously.
 - C. The horses adjusted to the island.
 - D. The fire department provides the horses with some veterinary care.

4. PART B: Which sentence from "The Wild Horses of Assateague Island" best supports the answer to Part A?
 - A. "The wild horses of Assateague Island are descendants of domesticated animals brought to the island over 300 years ago." (Paragraph 1)
 - B. "The Assateague horses drink over twice the amount of water that domesticated horses will due to their salty food supply." (Paragraph 9)
 - C. "Virginia's horses are privately owned by the Chincoteague Volunteer Fire Department and receive some veterinary care." (Paragraph 14)
 - D. "You can often see the horses and other wildlife by driving slowly along park roads." (Paragraph 15)

5. PART A: Which statement about how the horses came to live on Assateague Island has the most support in "The Wild Horses of Assateague Island"?
 - A. The horses were placed on the island by the government.
 - B. The horses swam to the island after a shipwreck.
 - C. The horses were put on the island by farmers.
 - D. The horses were native to the island.

6. PART B: Which phrase from "The Wild Horses of Assateague Island" best supports the answer to Part A?
- A. "dramatic tale of struggle and survival" (Paragraph 3)
 - B. "descendants of those hardy animals turned loose" (Paragraph 6)
 - C. "owned and managed by the National Park Service." (Paragraph 15)
 - D. "free-roaming wildlife and could be anywhere" (Paragraph 15)

...

...

Name: _____

Class: _____

Emergency on the Mountain

By Kerry McGee
2011

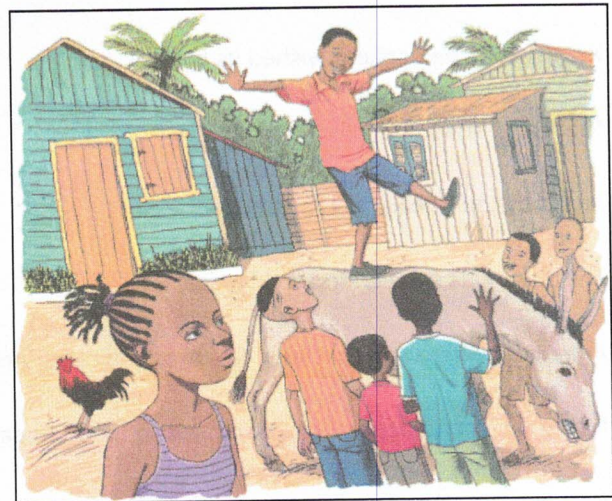
Kerry McGee has written for Highlights. In this short story, a young girl must act quickly when there is an emergency on the mountain where she lives. As you read, take notes on Ana's actions during the emergency.

[1] "Ana! *Leche!*" Mama called.

Milk. It was Ana's turn to get it. Ana sighed and shut her first-aid book. Her head hurt from reading in the dim morning light, but how else was she going to learn?

The milk pail banged against Ana's shins as she trudged¹ down the steep slope. Green mountains circled the misty valley. Across the valley was the dusty yellow road that connected this village to the next one eight kilometers away.

Ana tethered² the cow close to the fence. Somewhere below and out of sight lay Santiago, the second-biggest city in the Dominican Republic. And somewhere in Santiago, Ana knew, a group of volunteer doctors were gathering right now to teach medical skills to village nurses, or *cooperadoras*.



"No wonder they don't trust kids. Ana sighed." by Rogerio Sound is used with permission.

[5] *I should be there,* Ana thought. *Leta should have taken me with her.* Hours ago, Ana had heard the roar of a truck in the darkness and realized that her neighbor Leta was beginning the long drive down the mountain to the meeting.

But Leta already knows everything, Ana thought. Leta had been the *cooperadora* since before Ana was born. She'd been delivering babies, pulling teeth, and bandaging wounds in the village for decades.

Fresh milk squirted into the pail. *Leta thinks I'm too young to learn anything important,* Ana thought. *But she's wrong. I am old enough to help.*

Ana lugged the milk back to where Mama was frying eggs in the cooking shelter, then grabbed some bread and wandered up to the road.

1. **Trudge (verb)** to walk slowly and with heavy steps
2. to tie an animal with a rope to keep it from moving

Rafi, a village boy, had gotten a donkey, and some kids had gathered around to see it. Rafi was 13, just a little older than Ana, but he was always doing something to get attention. Like now: he was trying to stand on the animal's bare back.

[10] *No wonder they don't trust kids with anything important, Ana thought, sighing.*

She had just turned away when she heard a thud and a few screams.

Rafi lay on the ground nearby. The donkey stood several meters away.

"Rafi!" someone cried.

No answer. The donkey swished its tail.

[15] "Get Leta," someone said.

Ana shook her head. "Leta's gone to the city."

The other kids seemed frozen in place.

Ana ran to where Rafi was lying. She dropped to her knees on the dusty road. "Rafi! Can you hear me?"

Rafi moaned and flopped his head back and forth in pain.

[20] Ana saw that one of his legs was crooked, bent a little sideways between the knee and the ankle. A broken leg!

She remembered what the first-aid book had said about broken legs: *If there is no ambulance, stabilize the bone before moving the victim.*

There certainly wouldn't be any ambulance here. Ana looked back up the road. The other kids were still standing there, watching.

"Vin!" Ana called to one of the boys. "Go get Rafi's mama, and find someone with a truck." She turned to the others. "Give me your shirts. We need something to tie his leg with."

As Vin took off running, the others huddled³ closer.

[25] Rafi whimpered, and Ana said gently, "Rafi, you'll need to go down the mountain for a cast. But first, I'm going to tie your leg so it doesn't move around. Can you wiggle your toes?"

Rafi nodded, his eyes squeezed shut. Ana pulled off his shoe and watched him wiggle his toes.

3. **Huddle** (*verb*) to crowd together



Ana found a strong, straight stick, which she'd use to keep his leg steady. She carefully wrapped the boys' shirts around his leg and the stick, winding down from his knee to his ankle. Rafi opened his eyes and cringed.

"I know it hurts," Ana said. "But this will hold it still until you get to the hospital."

When Ana was done, she looked up and saw Rafi's mama watching from a few meters away. Behind her was a neighbor in a pickup truck. When Ana stepped away, Rafi's mama ran over and held Rafi's face in her hands.

[30] "Gracias, Ana," she said.

Rafi's mama and neighbor lifted Rafi into the truck, then drove down the dusty hillside toward the hospital.

The next day, Leta came to Ana's home. "I heard what you did," Leta said. "You kept your head in an emergency. That's an important skill."

Ana blushed. "I was afraid..."

Leta shook her head. "It's OK for a *cooperadora* to be afraid, as long as she keeps her head. Now, listen. The volunteer doctors are coming here tomorrow with vaccines.⁴ We need some extra hands. Can you help?"

[35] Ana didn't hesitate. "I would love to."

"Come early, then. There is a lot to learn."

Ana smiled. "I'll bring my first-aid book."

All Highlights material is copyrighted by Highlights for Children, Inc., and/or various authors and illustrators. Any commercial use or distribution of material without permission is strictly prohibited. Please visit www.highlights.com for more information.

Unless otherwise noted, this content is licensed under the [CC BY-NC-SA 4.0 license](https://creativecommons.org/licenses/by-nc-sa/4.0/)

4. something injected into someone to protect them from disease

Text-Dependent Questions

Directions: For the following questions, choose the best answer or respond in complete sentences.

1. PART A: What does the word "stabilize" mean as it is used in paragraph 21 of the passage from "Emergency on the Mountain"?
 - A. bend back to the original position
 - B. carry an object very carefully
 - C. relieve incredible pain
 - D. keep something still

2. PART B: Which TWO sentences from the passage help the reader understand the meaning of "stabilize"?
 - A. "The other kids were still standing there, watching." (Paragraph 22)
 - B. "'Go get Rafi's mama, and find someone with a truck.'" (Paragraph 23)
 - C. "'But first, I'm going to tie your leg so it doesn't move around.'" (Paragraph 25)
 - D. "Ana pulled off his shoe and watched him wiggle his toes." (Paragraph 26)
 - E. "Ana found a strong, straight stick, which she'd use to keep his leg steady." (Paragraph 27)
 - F. "When Ana stepped away, Rafi's mama ran over and held Rafi's face in her hands." (Paragraph 29)

3. PART A: Which phrase best describes the setting of the passage?
 - A. a quiet town with many doctors and nurses
 - B. a family farm located far from neighbors
 - C. a busy city with a large medical center
 - D. a small community that has no modern hospital

4. PART B: Which TWO details from the passage support the answer to Part A?
 - A. "The milk pail banged against Ana's shins as she trudged down the steep slope." (Paragraph 3)
 - B. "Green mountains circled the misty valley." (Paragraph 3)
 - C. "Across the valley was the dusty yellow road that connected this village to the next one eight kilometers away." (Paragraph 3)
 - D. "Somewhere below and out of sight lay Santiago, the second-biggest city in the Dominican Republic." (Paragraph 4)
 - E. "She dropped to her knees on the dusty road." (Paragraph 18)
 - F. "There certainly wouldn't be any ambulance here." (Paragraph 20)

5. PART A: In "Emergency on the Mountain," why does Leta most likely invite Ana to help the volunteer doctors?
 - A. Ana has been studying hard.
 - B. Ana was able to stay calm during a crisis.
 - C. Ana is willing to help her family.
 - D. Ana wants to be treated like an adult.

6. PART B: Which detail from the passage best supports the answer to Part A?
- A. "Her head hurt from reading in the dim morning light, but how else was she going to learn?" (Paragraph 2)
 - B. "Ana tethered the cow close to the fence." (Paragraph 4)
 - C. "Leta thinks I'm too young to learn anything important, Ana thought. But she's wrong. I am old enough to help." (Paragraph 7)
 - D. "'You kept your head in an emergency. That's an important skill.'" (Paragraph 32)
7. PART A: Which sentence best describes a theme of the passage?
- A. Studying hard brings positive results during times of crisis.
 - B. Taking turns with family chores teaches responsibility.
 - C. Children need experience before they can be helpful.
 - D. People should never stop discovering new information.
8. PART B: Which detail from the passage supports the answer to Part A?
- A. "Ana lugged the milk back to where Mama was frying eggs in the cooking shelter, then grabbed some bread and wandered up to the road." (Paragraph 8)
 - B. "No wonder they don't trust kids with anything important, Ana thought, sighing." (Paragraph 10)
 - C. "She remembered what the first-aid book had said about broken legs: If there is no ambulance, stabilize the bone before moving the victim." (Paragraph 21)
 - D. "'We need some extra hands. Can you help?'" (Paragraph 34)

Name _____

**Chapter
1**

B.E.S.T. Test Prep

1. Complete the statement about the underlined digits. For each box, fill in the bubble before the number that is correct.

6,000 and 600

The value of

(A) 0
(B) 6

 in 6,000 is

(A) 1
(B) 10
(C) 100
(D) 1,000

 times the value of

(A) 0
(B) 6

 in 600.

-
2. Select the standard form and expanded form for the number three thousand, two hundred fourteen.

- (A) Standard form: 2,314
Expanded form: 2,000 + 300 + 10 + 4
- (B) Standard form: 3,014
Expanded form: 3,000 + 10 + 4
- (C) Standard form: 3,204
Expanded form: 3,000 + 200 + 4
- (D) Standard form: 3,214
Expanded form: 3,000 + 200 + 10 + 4

-
3. Select >, <, or = to make each comparison statement true.

	>	<	=
4,507 ○ 4,293	(A)	(B)	(C)
712,108 ○ 712,108	(D)	(E)	(F)
64,867 ○ 65,813	(G)	(H)	(I)

Chapter 1 **B.E.S.T. Test Prep** (continued)

4. Round 347,059 to the nearest ten thousand.

	7	7	7	7	7	
.
0	0	0	0	0	0	0
1	1	1	1	1	1	1
2	2	2	2	2	2	2
3	3	3	3	3	3	3
4	4	4	4	4	4	4
5	5	5	5	5	5	5
6	6	6	6	6	6	6
7	7	7	7	7	7	7
8	8	8	8	8	8	8
9	9	9	9	9	9	9

5. Your cousin is 5 years old. Your neighbor is 50 years old. Your neighbor is how many times as old as your cousin?

	7	7	7	7	7	
.
0	0	0	0	0	0	0
1	1	1	1	1	1	1
2	2	2	2	2	2	2
3	3	3	3	3	3	3
4	4	4	4	4	4	4
5	5	5	5	5	5	5
6	6	6	6	6	6	6
7	7	7	7	7	7	7
8	8	8	8	8	8	8
9	9	9	9	9	9	9

6. The table shows the prices of four different laptops. Which comparison statement is true?

- (A) The price of Laptop A is equal to the price of Laptop C.
- (B) The price of Laptop B is greater than the price of Laptop A.
- (C) The price of Laptop C is less than the price of Laptop D.
- (D) The price of Laptop B is less than the price of Laptop D.

Laptop Prices	
Laptop A	\$1,350
Laptop B	\$1,125
Laptop C	\$1,450
Laptop D	\$1,150

Name _____

**Chapter
2**

B.E.S.T. Test Prep

1. Six friends go out to breakfast and spend \$66. How much does each friend spend if they each spend the same amount? For each box, fill in the bubble before the expression or number that is correct.

The equation

<input type="radio"/> A $6 + b = 66$
<input type="radio"/> B $66 - 6 = b$
<input type="radio"/> C $6 \times b = 66$
<input type="radio"/> D $6 \times 66 = b$

 can be used to find the amount each friend spends on breakfast, b . Each friend spends

<input type="radio"/> A \$6
<input type="radio"/> B \$11
<input type="radio"/> C \$36
<input type="radio"/> D \$60

.

2. Newton has 36 stamps, which is 4 times as many stamps as Descartes. Descartes has 9 stamps. Which equation represents this comparison?

- A $36 - 4 = 9$
 B $36 = 4 + 9$
 C $36 \times 4 = 9$
 D $36 = 4 \times 9$

3. Select *true* or *false* for each equation.

	True	False
$16 + 17 + 18 \stackrel{?}{=} 3 \times 17$	<input type="radio"/> A	<input type="radio"/> B
$8 \times 4 \stackrel{?}{=} 184 - 152$	<input type="radio"/> D	<input type="radio"/> E
$12 \times 5 \stackrel{?}{=} 5 \times 10$	<input type="radio"/> G	<input type="radio"/> H

Chapter 2 **B.E.S.T. Test Prep** (continued)

4. What is the missing factor?

$$7 \times \underline{\quad} = 56,000$$

	/	/	/	/	/	
.
0	0	0	0	0	0	0
1	1	1	1	1	1	1
2	2	2	2	2	2	2
3	3	3	3	3	3	3
4	4	4	4	4	4	4
5	5	5	5	5	5	5
6	6	6	6	6	6	6
7	7	7	7	7	7	7
8	8	8	8	8	8	8
9	9	9	9	9	9	9

5. There are 37 cabins at a campsite. There are 4 people staying in each cabin. How many people are staying in the cabins?

	/	/	/	/	/	
.
0	0	0	0	0	0	0
1	1	1	1	1	1	1
2	2	2	2	2	2	2
3	3	3	3	3	3	3
4	4	4	4	4	4	4
5	5	5	5	5	5	5
6	6	6	6	6	6	6
7	7	7	7	7	7	7
8	8	8	8	8	8	8
9	9	9	9	9	9	9

6. Which expression is *not* equal to 198×4 ?

- (A) $(1 \times 4) + (9 \times 4) + (8 \times 4)$
- (B) 4×198
- (C) $(200 \times 4) - (2 \times 4)$
- (D) $(100 + 90 + 8) \times 4$

7. Multiply 346×7 . Select all the partial products.

- (A) 28
- (B) 42
- (C) 67
- (D) 210
- (E) 280
- (F) 2,100

8. A number has two periods. The thousands period is written in expanded form as $600,000 + 20,000 + 4,000$. The ones period is written in word form as three hundred seventy.

What is the number?

- (A) 370,624
- (B) 624,307
- (C) 624,370
- (D) 642,370

Name _____

Chapter 3 **B.E.S.T. Test Prep**

1. Complete the statement about the product to the right. For each box, fill in the bubble before the number or equation that is correct.

$$\begin{array}{r}
 57 \\
 \times \square 4 \\
 \hline
 200 \\
 28 \\
 1,500 \\
 + 210 \\
 \hline
 \end{array}$$

The missing digit is

<input type="radio"/> A 3
<input type="radio"/> B 4
<input type="radio"/> C 5
<input type="radio"/> D 6

because

<input type="radio"/> A $6 \times 7 = 42$
<input type="radio"/> B $40 \times 7 = 280$
<input type="radio"/> C $30 \times 50 = 1,500$
<input type="radio"/> D $50 \times 50 = 2,500$

The product is

<input type="radio"/> A 1,928
<input type="radio"/> B 1,938
<input type="radio"/> C 2,038
<input type="radio"/> D 2,938

2. You want to find 768×4 . Select all of the expressions that show how to use the Distributive Property to find the product.

- A $4 \times (700 + 60 + 8)$ C $2,800 + 240 + 32$
 B $(4 \times 700) + (4 \times 60) + (4 \times 8)$ D $(4 \times 7) + (4 \times 6) + (4 \times 8)$

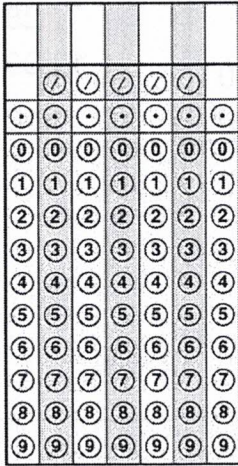
3. Is the number greater than 734,586? Select *yes* or *no* for each number.

	yes	no
437,586	<input type="radio"/> A	<input type="radio"/> B
734,856	<input type="radio"/> D	<input type="radio"/> E
735,568	<input type="radio"/> G	<input type="radio"/> H

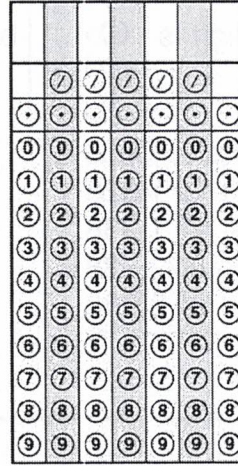
Chapter 3

B.E.S.T. Test Prep (continued)

4. What is the greatest number you can make using each of the digits 5, 0, 9, 3, and 7 once?



5. An adult pass costs \$75. A child pass costs \$39. What is the total cost, in dollars, for 12 adults and 24 children?



6. What value of n makes the equation true?

$$12 \times 11 = 150 - n$$

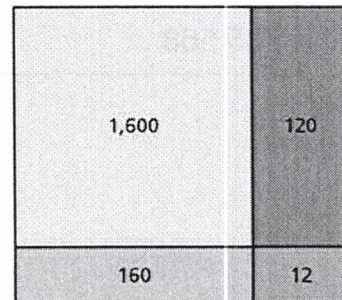
- (A) 12
- (B) 18
- (C) 22
- (D) 28

7. The number two hundred seventy thousand, fifty-one is in a science book. What is this number in standard form?

- (A) 270,510
- (B) 207,510
- (C) 270,051
- (D) 207,051

8. Which multiplication expressions could be represented by the area model?

- (A) 160×10
- (B) 60×2
- (C) 43×44
- (D) 40×4
- (E) 120×16
- (F) 22×86



Name _____

Chapter 4 **B.E.S.T. Test Prep**

1. Joe has 30 apples. He divides them equally among 7 baskets. For each box, fill in the bubble before the number that is correct.

Each basket has

(A) 3
(B) 4
(C) 5
(D) 6

 apples. There are

(A) 1
(B) 2
(C) 3
(D) 4

 apples left over.

2. Mr. Sanchez wants to give each of 10 students 3 pencils. There are 8 pencils in each box. How many boxes must he buy?

- (A) 3 (C) 24
(B) 4 (D) 32

3. Select *true* or *false* for each equation.

	True	False
$56 \div 7 = 4 \times 2$	(A)	(B)
$121 \div 11 = 60 \div 5$	(D)	(E)
$63 \div 9 = 3 + 4$	(G)	(H)

4. Which expression does *not* have an estimated product of 48,000?

- (A) $8 \times 5,879$ (C) $12 \times 3,516$
(B) $6 \times 8,248$ (D) $4 \times 11,283$

Chapter 4

B.E.S.T. Test Prep (continued)

5. What value of a makes the equation true?

$$11 \times 7 = 25 + a$$

	/	/	/	/	/	
.
0	0	0	0	0	0	0
1	1	1	1	1	1	1
2	2	2	2	2	2	2
3	3	3	3	3	3	3
4	4	4	4	4	4	4
5	5	5	5	5	5	5
6	6	6	6	6	6	6
7	7	7	7	7	7	7
8	8	8	8	8	8	8
9	9	9	9	9	9	9

6. John divides $535 \div 8$. What is the remainder as a fraction?

	/	/	/	/	/	
.
0	0	0	0	0	0	0
1	1	1	1	1	1	1
2	2	2	2	2	2	2
3	3	3	3	3	3	3
4	4	4	4	4	4	4
5	5	5	5	5	5	5
6	6	6	6	6	6	6
7	7	7	7	7	7	7
8	8	8	8	8	8	8
9	9	9	9	9	9	9

7. What value of n makes the equation true?

$$12 \times 11 = 150 - n$$

- (A) 12
- (B) 18
- (C) 22
- (D) 28

8. Which is equal to 36×49 ?

- (A) $(30 \times 6) \times (40 \times 9)$
- (B) $(30 + 40) \times (6 + 9)$
- (C) $(30 + 9) \times (40 + 6)$
- (D) $(30 + 6) \times (40 + 9)$

9. A student finds the product. Is her answer reasonable? Select *yes* or *no* for each equation.

	Yes	No
$623 \times 58 = 36,134$	(A)	(B)
$1,952 \times 74 = 130,664$	(D)	(E)
$46 \times 91 = 366$	(G)	(H)

Name _____

**Chapter
5**

B.E.S.T. Test Prep

1. Newton has 38 toy cars. He divides them equally among 6 crates. For each box, fill in the bubble before the number that is correct.

Each crate has

<input type="radio"/> A	3
<input type="radio"/> B	4
<input type="radio"/> C	5
<input type="radio"/> D	6

toy cars. There are

<input type="radio"/> A	2
<input type="radio"/> B	3
<input type="radio"/> C	4
<input type="radio"/> D	5

toy cars left over.

2. Descartes has 21 pencils. He wants to put the same number of pencils in each box. Select all possible numbers of pencils that he can put in each box.

A 2 pencils

C 6 pencils

B 3 pencils

D 7 pencils

3. Select *prime* or *composite* for each number.

	Prime	Composite
56	<input type="radio"/> A	<input type="radio"/> B
121	<input type="radio"/> C	<input type="radio"/> D
37	<input type="radio"/> E	<input type="radio"/> F

4. Which expression shows how to use the Distributive Property to find 249×3 ?

A $(3 \times 200) \times (3 \times 40) \times (3 \times 9)$

B $(3 \times 200) + (3 \times 40) + (3 \times 9)$

C $(3 + 200) + (3 + 40) + (3 + 9)$

D $(3 + 200) \times (3 + 40) \times (3 + 9)$

Chapter 5

B.E.S.T. Test Prep (continued)

5. What is the missing factor?

$3 \times ? = 2,400$

	7	7	7	7	7	
•	•	•	•	•	•	•
0	0	0	0	0	0	0
1	1	1	1	1	1	1
2	2	2	2	2	2	2
3	3	3	3	3	3	3
4	4	4	4	4	4	4
5	5	5	5	5	5	5
6	6	6	6	6	6	6
7	7	7	7	7	7	7
8	8	8	8	8	8	8
9	9	9	9	9	9	9

6. Newton divides 1,497 by 6. What is the remainder as a fraction?

	7	7	7	7	7	
•	•	•	•	•	•	•
0	0	0	0	0	0	0
1	1	1	1	1	1	1
2	2	2	2	2	2	2
3	3	3	3	3	3	3
4	4	4	4	4	4	4
5	5	5	5	5	5	5
6	6	6	6	6	6	6
7	7	7	7	7	7	7
8	8	8	8	8	8	8
9	9	9	9	9	9	9

7. Between which two numbers is the quotient $3,457 \div 60$?

- (A) 5 and 6
- (B) 6 and 7
- (C) 50 and 60
- (D) 60 and 70

8. There are 48 students who take French. There are 4 times as many students who take Latin. How many students take Latin?

- (A) 12
- (B) 168
- (C) 192
- (D) 224

9. Is the number a *factor* or *multiple* of 12? Select *factor* or *multiple* for the number.

	Factor	Multiple
24	(A)	(B)
6	(C)	(D)
3	(E)	(F)

**Chapter
6**

B.E.S.T. Test Prep

1. Complete the statement about the pattern. For each box, fill in the bubble before the number that is correct.

2, 3, 5, 9, 17, 33

The next number in this pattern is _____, because the

rule is

- A $\times 2$
- B $\times 2, -1$
- C $\times 3, \div 2$
- D $\times 3, -10$

- A 99
- B 67
- C 65
- D 34

2. What number is equal to $500,000 + 20,000 + 300 + 1$?

- A 523,001
- B 523,010
- C 520,031
- D 520,301

3. Select $>$, $<$, or $=$ to make each comparison statement true.

	$>$	$<$	$=$
$\frac{4}{8} \bigcirc \frac{8}{16}$	<input type="radio"/> A	<input type="radio"/> B	<input type="radio"/> C
$\frac{5}{15} \bigcirc \frac{3}{5}$	<input type="radio"/> D	<input type="radio"/> E	<input type="radio"/> F
$\frac{3}{7} \bigcirc \frac{5}{21}$	<input type="radio"/> G	<input type="radio"/> H	<input type="radio"/> I

**Chapter
6**

B.E.S.T. Test Prep (continued)

4. What is 4,291 divided by 7?

	/	/	/	/	/	
.
0	0	0	0	0	0	0
1	1	1	1	1	1	1
2	2	2	2	2	2	2
3	3	3	3	3	3	3
4	4	4	4	4	4	4
5	5	5	5	5	5	5
6	6	6	6	6	6	6
7	7	7	7	7	7	7
8	8	8	8	8	8	8
9	9	9	9	9	9	9

5. It takes a student 38 steps to get to the third floor of his school. He walks up and down the steps three different times each day. How many total steps does he climb up and down in one day?

	/	/	/	/	/	
.
0	0	0	0	0	0	0
1	1	1	1	1	1	1
2	2	2	2	2	2	2
3	3	3	3	3	3	3
4	4	4	4	4	4	4
5	5	5	5	5	5	5
6	6	6	6	6	6	6
7	7	7	7	7	7	7
8	8	8	8	8	8	8
9	9	9	9	9	9	9

6. Which of these is an equivalent fraction to the fraction shown by the model?

(A) $\frac{2}{3}$

(B) $\frac{4}{5}$

(C) $\frac{9}{15}$

(D) $\frac{12}{20}$

